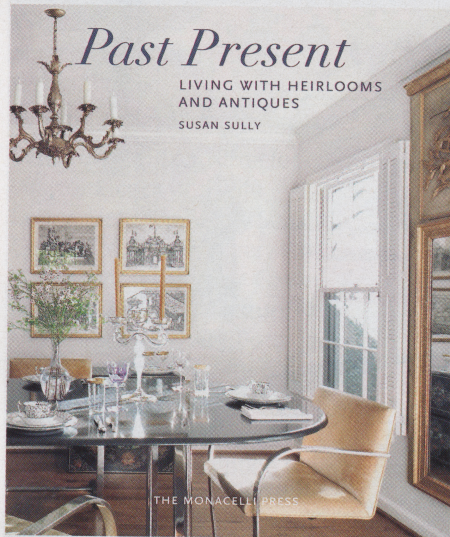


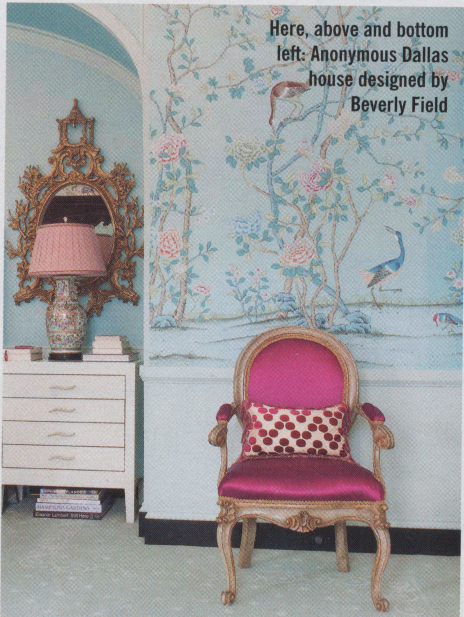
PaperCITY

# PAPER CITY { DECORATION }



## Past Present

LIVING WITH HEIRLOOMS  
AND ANTIQUES  
SUSAN SULLY



Here, above and bottom  
left: Anonymous Dallas  
house designed by  
Beverly Field



## NATURAL RESOURCE

Designer **Brenda Houston** rocks. Gemstones and minerals make up her handsome furnishings and decorative objects, all exquisitely exhibited in a new showroom off Riverside Drive near the Dallas Design District. Besides stocking her staple sparklers, the showroom serves as a launch pad for Houston's freshest ideas, such as shimmer wallpaper with a three-dimensional texture in beaded abalone and tiger's-eye patterns (available through Allan Knight Associates). Also new are wood objects — an 8-foot-tall banana-leaf sculpture carved by a Burmese artisan, fossilized wood from Morocco in striking red hues, a massive mounted natural vine from Thailand and tall peaks of termite



Brenda Houston's  
new showroom

wood — that provide a sculptural organic element to a space. Stones, however, are still Houston's mainstay. The showroom brims with onyx lamps, giant jasper bowls, malachite boxes and agate tables. We can't get enough of the selenite glass and brass coffee table that won Best in Show at the 2015 International Contemporary Furniture Fair in New York. *Brenda Houston, 1218 Manufacturing St., 626.354.1559, [brendahouston.com](http://brendahouston.com). Rebecca Sherman*

# JAN SHOWERS REIGNS